



F-250/550 Power Stroke® Diesel Maintenance Intervals

Power Stroke Diesel engines and Super Duty® pickups are used in a large variety of demanding applications. Their owners put them through their paces and keep bringing them back for more. You can help ensure your Power Stroke Diesel engine provides unmatched performance and durability by always following the proper prescribed maintenance schedule.

There are two different types of operating conditions: Normal Service and Special Service. Normal Service intervals are considered general vehicle usage while Special Service intervals are defined as follows:

- Frequent or extended idling
 - Over 10 minutes per hour of normal driving
 - Frequent low speed operation
 - Sustained heavy traffic less than 25 MPH (40 KMH)
- One hour of idle time, is equal to approximately 25 miles (40 km) of driving
- Operating in sustained ambient temperatures below -10°F (-23°C) or above 100°F (38°C)
- Operating in severe dust or off-road conditions
- Towing a trailer over 1,000 miles (1,600 km)
- Sustained, high speed driving at Gross Vehicle Weight Rating (maximum loaded weight for vehicle operation)
- Use of any Biodiesel
 - B5 is the maximum allowable blend to be used in any Power Stroke Diesel

Normal Service Intervals are defined as follows:

- 7.3L:
 - Oil Filter: 5,000 miles (8,000 km)
 - Fuel Filter: 15,000 miles (24,000 km)
- 6.0L:
 - Oil Filter: 7,500 miles (12,000 km)
 - Fuel Filters: 15,000 miles (24,000 km)
- 6.4L
 - Oil Filter: 10,000 miles (16,000 km)
 - Fuel Filters: 20,000 miles (32,000 km)

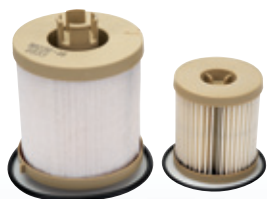
Special Service Intervals are defined as follows:

- 7.3L:
 - Oil Filter: 3,000 miles (5,000 km)
 - Fuel Filter: 15,000 miles (24,000 km) (*Whichever occurs first*)
- 6.0L:
 - Oil Filter: 5,000 miles (8,000 km), 200 engine hours or 3 months (*Whichever occurs first*)
 - Fuel Filters: 10,000 miles (16,000 km), 400 engine hours or 6 months (*Whichever occurs first*)
- 6.4L:
 - Oil Filter: 5,000 miles (8,000 km), 200 engine hours or 3 months (*Whichever occurs first*)
 - Fuel Filters: 10,000 miles (16,000 km), 400 engine hours or 6 months

Note: All other maintenance intervals can be found in the Diesel Owner's Supplement issued with every new Power Stroke® Diesel powered F-Series Super Duty® and E-Series vehicle.



Motorcraft FL-2016



Motorcraft FD-4604

