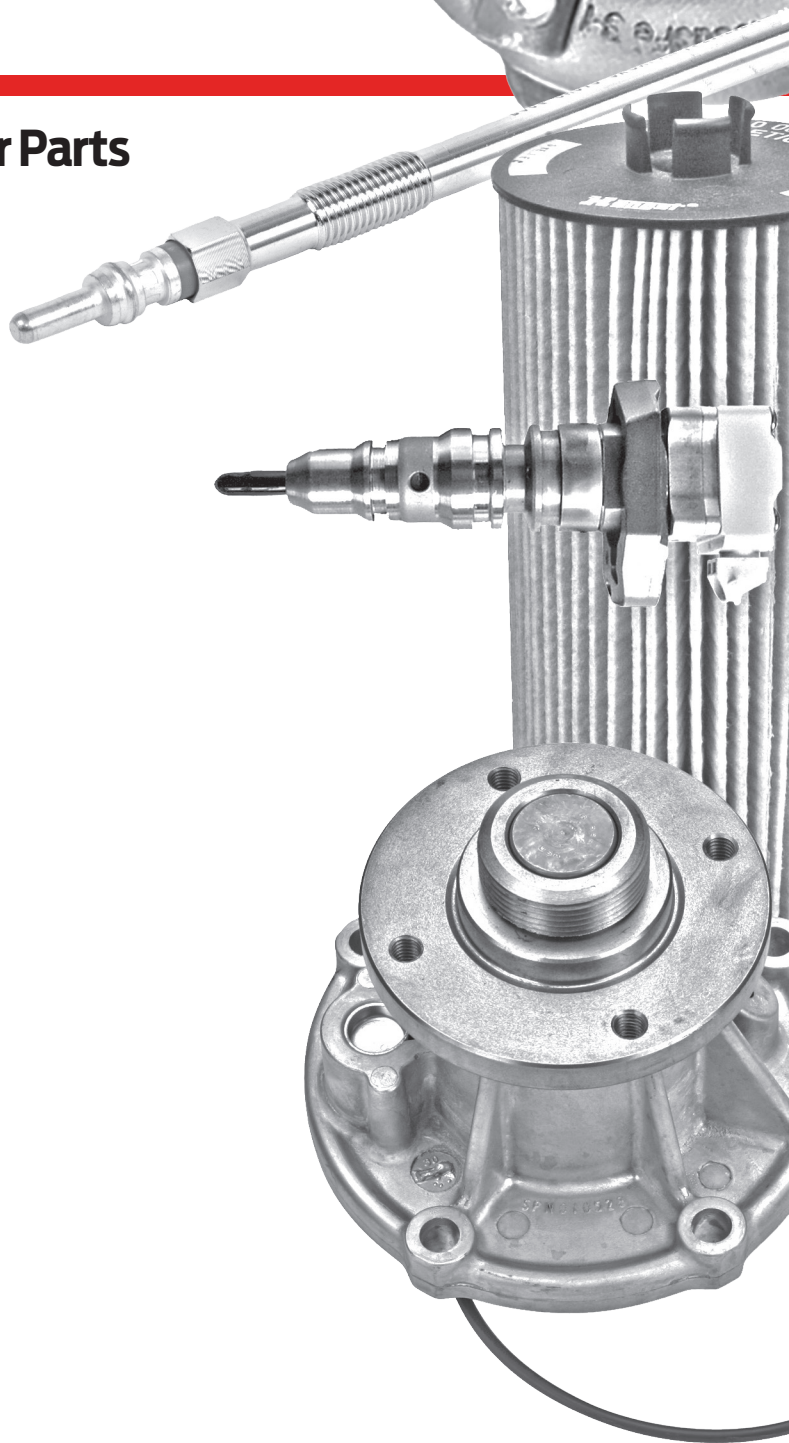


MOTORCRAFT® **DIESEL**

Maintenance & Light Repair Parts



Motorcraft®

WHY

MOTORCRAFT®

The Ford Power Stroke® Diesels

Customers have long sought Ford Power Stroke Diesels for their well-earned reputation for rugged durability. After all, when your truck works for a living – dependable isn’t a word tossed around lightly. From gritty construction sites and dusty farm roads to remote oil fields and coast-to-coast convoys chewing up the miles - Ford Power Stroke Diesels pay the rent!

Motorcraft Diesel Replacement Parts

And when it comes to maintaining your customers’ trucks, Motorcraft is right there with premium diesel replacement parts, that are as reliable and dependable as the trucks they serve. Whether it’s maintenance fluids, filters and additives or repair parts, Motorcraft is serious about delivering high quality. Our goal is to keep your customers rolling and to help keep their operating costs down. Because we know when a truck is in the shop, downtime can cost the owner a lot more than just the cost of the repair.

What’s more – Ford Motor Company stands behind every Motorcraft Diesel part we sell. Factory engineers design, develop and test these parts to the same grueling OE standards applied to our Ford Trucks. And no one tests trucks like a Ford Engineer.

Coverage

But engineering, testing and application-specific designs are only half the battle. Ford Motor Company boasts coast-to-coast distribution. And, it’s not just a few high-volume parts either; Motorcraft has unparalleled breadth and depth of coverage. All this, so that when a customer calls with a truck down and the clock is ticking, the right parts aren’t far away.



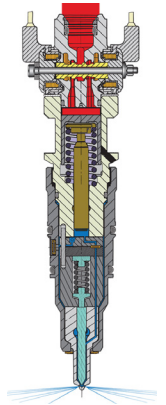
MOTORCRAFT®

DIESEL FUEL INJECTION PARTS

Only genuine Motorcraft Remanufactured Fuel Injectors and Fuel Injection Control Modules (FICM) feature proprietary engineering enhancements developed by Ford engineers to minimize downtime and repair expense while maximizing durability and performance.

Remanufactured Fuel Injectors

- The Internal components of the Power Stroke® Diesel's fuel injectors are precisely engineered to the extreme tolerances that are critical to generating peak horsepower and torque
- New coil assemblies with slotted end caps help improve durability and engine performance and help prevent wire fatigue and poor cold-start conditions
- High pressure sealing surfaces inside the cylinder head assembly are refinished to original specifications; less than two microns of flatness, which is critical to high pressure (20,000-plus psi), injection systems
- Injector's intensifier bodies are given new plungers, and both components are precision match-honed to operate at extreme pressures and temperatures with durability and reliability
- All spool valves are replaced with new parts, and both control valve bodies and spools are precision ground to Ford exacting tolerances for excellent sealing and oil direction
- Motorcraft uses new rod assemblies, new M4 screws and cone nuts, 100 percent flow-tested nozzles and nitrogen leak-tested injector assemblies to help ensure proper performance



Motorcraft FICM Advantages:

- Power Supply Board resistors - New, re-engineered resistors feature robust "shock absorber" leads – don't risk reused, crack prone electrical leads
- Vibration Resistance - OE resistors with 'shock absorber' electrical leads eliminate hot-melt gluing of leads. AM hot-melt glue drizzled over leads can lock in damaging heat
- Soldering Techniques - Correct solder filleting of re-engineered genuine OE resistor leads ensures proper electrical contact and resists cracking; helps prevent a "cold" solder joint that could lead to poor electrical contact, cracking or component failure
- FICM Housing Finish – Motorcraft housings are left unfinished – never painted - to help dissipate heat
- Vacuum-checked gasketed cover help resist leaks
- Enhanced end-of-line quality checks and thermal testing help ensure reliable operation



Pre-programmed FICM

- When the clock is ticking and every moment of downtime matters, busy shops will often reach for a pre-programmed FICM
- It's perfect for field repairs because there's no need to tow the vehicle, transport programming equipment to the repair site, or perform any programming back at the shop
- Just swap the unit and the engine is back in service

MOTORCRAFT® DIESEL

Built to OE standards; engineered with precision; and designed with fully integrated capabilities – these are just a few of the qualities that set Motorcraft Diesel parts apart. And these are the only diesel parts recommended by Ford for diesel engines in Ford Motor Company vehicles.

Turbocharger

- CAFE standards continue to influence auto makers to increase fuel economy on new vehicles using new and ever-smaller displacement turbocharged engines. Customers enjoy high engine power and torque while maintaining thrifty fuel economy
- All Motorcraft Turbos feature the latest advanced engineering enhancements



Glow Plug

- Motorcraft makes the only glow plug designed specifically for Ford Power Stroke® Diesel Engines, featuring rigorous testing and patented designs
- Motorcraft Glow Plugs undergo demanding environmental tests to help ensure against corrosion. They are also subjected to tests designed to replicate the practical demands of daily running
- Motorcraft Glow Plugs are designed to last a minimum of 10,000 ignition cycles



Power Stroke Diesel OE Water Pumps

Power Stroke Diesel engine water pumps should only be replaced with a new, Genuine Motorcraft water pump.

- All components meet Original Equipment specifications and are made of the highest quality materials
- A new Protective Cap for Threaded Hub – protects delicate threads on hub during packaging and transport
- New Stainless Steel Hub – highest quality material guards against water and coolant corrosion
- New Bearing – same high quality bearing used on Original Equipment (OE) production pumps
- New Casting – a totally new casting manufactured using OE material and dimensions
- New Seal – same high quality seal used on OE production pump



Diesel High Pressure Oil Pump

- The only high pressure oil pumps recommended by Ford
- Designed and tested to OE specs for a long service life
- Precision engineered and calibrated for maximum efficiency
- Latest engineering enhancements are incorporated
- Engineered to maintain proper oil pressure at all times under a wide range of operating conditions



MOTORCRAFT®

DIESEL ENGINE FILTERS

- Motorcraft diesel filters meet vehicle warranty requirements, help enhance performance and reduce engine wear
- Oil Filters provide optimum filtering throughout their intended service life
- Air Filters perform as designed in nearly any environment and are constructed of premium materials
- Fuel Filters/Separators help ensure incoming fuel is clean and water-free

Oil Filters



- Designed and engineered specifically for Ford Power Stroke® Diesel engines, Motorcraft oil filters keep particulates from damaging moving parts
- 6.4L and 6.0L Engines - 95% efficient at 20 microns and larger* with environmentally-friendly, top-load, “dripless” cartridge element
- 7.3L AND 6.7L Engine - 98% efficient at 18 microns and larger* with an anti-drain-back valve to prevent dry starts with material formulated to resist aging from engine heat

Air Filters

- Designed and engineered specifically for Ford Power Stroke Diesel engines, Motorcraft air filters supply clean, particulate-free air to your engine for optimal performance
- 99.99% efficient at one micron and larger*, holds approximately three pounds of debris before needing replacement (6.4/6.0L)
- Contains twice the filter media compared to conventional pleated filters (6.4/6.0L)
- Meets 98.5% efficiency standard in coarse dust testing with excellent dirt retention (7.3L)
- Chemically treated oil- and moisture-resistant dry filter elements (7.3L)
- Leak-proof polyurethane/adhesive seals ensure performance even at high underhood temperatures (7.3L)



Fuel Filters



- New for 6.7L - Fuel Water Separator is the only Ford tested separator on the market that meets Ford Fuel System Specifications
- Designed and engineered specifically for Ford Power Stroke Diesel engines, Motorcraft fuel filters separate fuel from water and keep particulates from damaging your engine's fuel injectors
- Diesel fuel provides power and lubricates the fuel pumps and injectors. When too much water or dirt gets in the fuel, pumps and injectors don't have the lubrication they need and can fail
- Motorcraft fuel filters feature patented Aquablock – designed to keep water out of the filter
- Motorcraft diesel fuel filters have a patented air bleed orifice that allows fuel to flow through the entire filter. Not all of our competitors have this feature, meaning the filter cannot be purged completely of air

*For comparison purposes, a human hair is approximately 74 microns.

MOTORCRAFT®

FAMILY OF CHEMICALS

Diesel Oil

- Specially formulated for use in all Power Stroke® engines
- Motorcraft motor oils are specially designed to provide maximum protection from wear, varnish deposits and sludge formation
- Motorcraft Super Duty® Diesel Motor Oil also helps protect against rust and corrosion, while minimizing exhaust emissions
- And now, Motorcraft offers a specially formulated engine oil for the F-150 3.0L Diesel engine



Motorcraft Diesel Engine Oil Lineup

- SAE 10W-30 F-150 Diesel Motor Oil
- SAE 15W-40 Super Duty Diesel Motor Oil
- SAE 5W-40 Full Synthetic Diesel Motor Oil
- SAE 5W-30 F-150 Full Synthetic Diesel Motor Oil
- SAE 10W-30 Super Duty Diesel Motor Oil



Motorcraft Coolants

- Motorcraft coolants provide the required additives at the proper levels to help protect your Power Stroke Diesel engine from cooling passage corrosion, oil cooler or EGR cooler clogging and cylinder wall cavitation
- The wrong coolant or mix of coolant can result in sludging, corrosion, overheating, cavitation and loss of performance
- Motorcraft coolants always have the correct additives for designated engine for optimum performance

Diesel Coolant Additives

- Motorcraft sells coolant designed for all available Power Stroke Diesel engines, with a range of SCA boosters and cooling system cleaners all formulated to get the very best from your vehicle
- Power Stroke Engine cooling systems using Motorcraft Gold coolant should be tested with every third oil change to determine if additional VC-8 is needed
- Using the proper coolant is essential for optimal engine and vehicle performance
- For optimum performance, Motorcraft offers the proper coolant and additives for all Power Stroke® Diesel engines

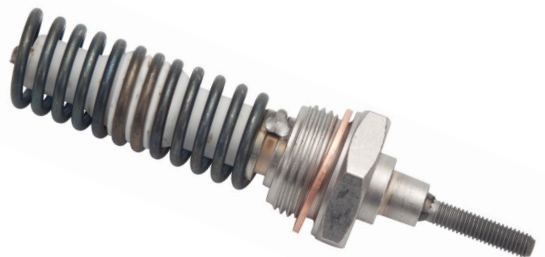
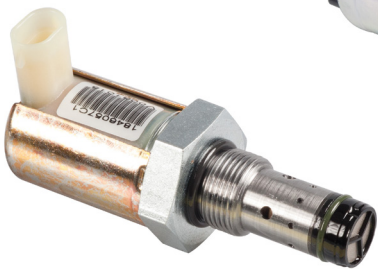
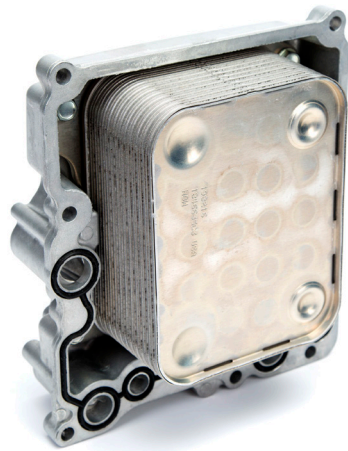


MOTORCRAFT®

ADDITIONAL DIESEL PRODUCTS

Motorcraft also offers the following OE products for your Super Duty maintenance and repairs:

- Oil Cooler
- EGR Cooler
- DEF
- Sensors
- Thermostats
- Power Stroke® Diesel Fuel Additives
- EGR Valve
- Injection Pressure Regulator Valve
- Fuel Pressure Valve
- Diesel Air Intake Heater
- Diesel Fuel Transfer Pump



MOTORCRAFT®

FAST MOVERS

Category	Engine Application	Ford Service Number	Motorcraft Part Number	% of Unit Sales
HPPs	6.0L	5C3Z-9A543-ARM	HPP-12-RM	28%
	6.4L	8C3Z-9A543-DRM	HPP-11-RM	28%
	6.0L	3C3Z-9A543-AARM	HPP-10-RM	18%
Injectors	6.0L	4C3Z-9E527-BRM	CN-5019-RM	66%
	6.0L	3C3Z-9E527-ECRM	CN-5020-RM	13%
	6.4L	8C3Z-9E527-DRM	CN-6017-RM	12%
Turbos	6.0L	5C3Z-6K682-CCRM	TC-17-RM	33%
	6.4L	8C3Z-6K682-CRM	TC-16-RM	18%
Glow Plugs	7.3L	F4TZ-12A342-BA	ZD-11	44%
	6.0L	4C3Z-12A342-AA	ZD-13	41%
Filters - Oil	6.7L	BC3Z-6731-B	FL-2051S	73%
	6.4L	3C3Z-6731-AA	FL-2016	27%
	6.0L			
Filters - Air	6.7L	BC3Z-9601-A	FA-1902	73%
	6.7L	BC3Z-9601-D	FA-1909	10%
Filters - Fuel	6.7L	BC3Z-9N184-B	FD-4615	59%
	6.0L	3C3Z-9N184-CB	FD-4616	21%
Water Pumps	6.7L	BC3Z-8501-A	PW-502	38%
	6.0L	4C3Z-8501-AC	PW-491	21%
	7.3L	F81Z-8501-FA	PW-455	17%
Additives	Cetane Booster - 20 fluid ounce (US)	—	PM-22A	76%
	Anti-Gel - 20 fluid ounce (US)	—	PM-23A	12%



Right Part. Priced Right.